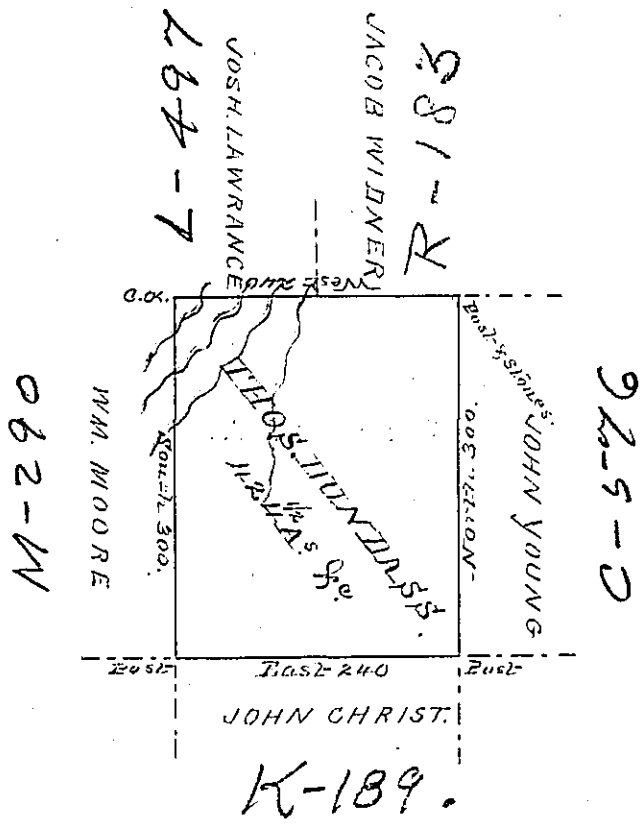


W



Draught of a Tract of Land, called *Situate in the*
 County of Luzerne, containing Four hundred & twenty four
 acres $\frac{1}{2}$ & allowt. Surveyed for Thomas Dundas the 19th. day
 of August 1793, by virtue of a Warrant dated the 4th. day
 of Jan'y. 1793. *by* Mr. Gray. D. S.
 To
 Daniel Brodhead Esq- }
 Surv. Genl. }

IN TESTIMONY that the above is a copy of the original remaining on file in the
 Department of Internal Affairs of Pennsylvania, made con-
 formably to an Act of Assembly approved the 16th day of
 February, 1833, I have hereunto set my Hand and caused
 the Seal of said Department to be affixed at Harrisburg, this
 Twenty-eighth day of November 1887.
Thos. J. Steward
 Secretary of Internal Affairs